



Community Survey 2025

The Survey

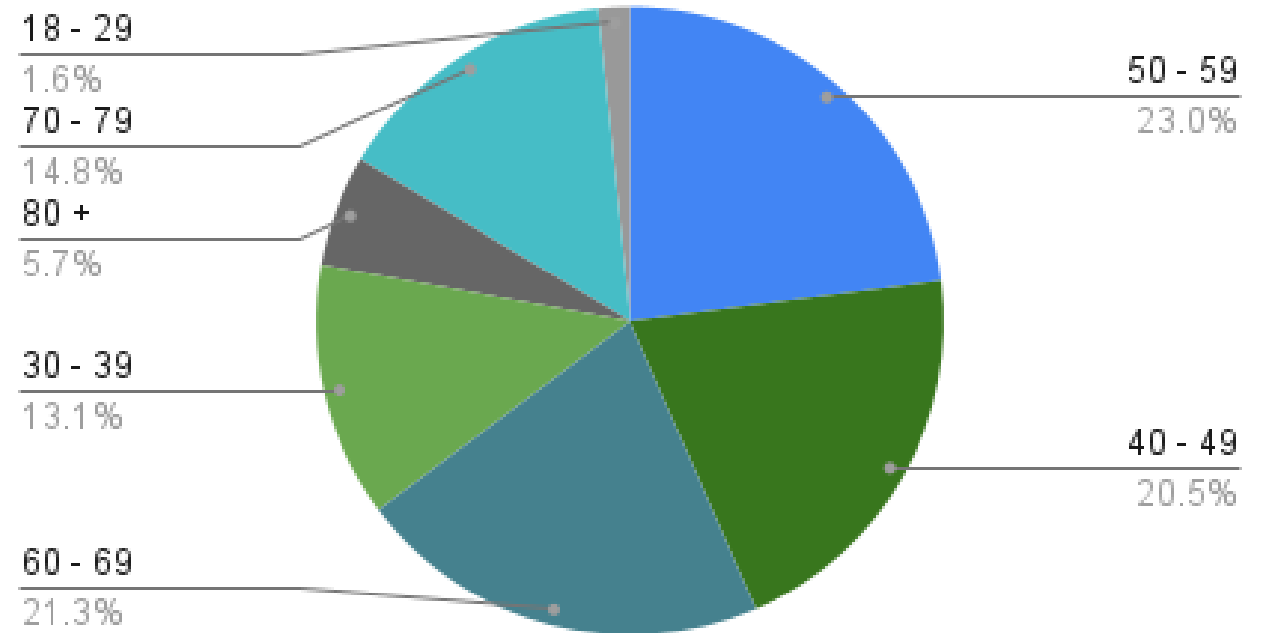
126 responses in total - 119 online and 7 paper received from February till early May 2025.

Open to all residents and business owners in Island Bay and Southgate.

Majority of responses received through promotion through:

- IBRA newsletter
- IBRA facebook page
- Island Bay Peeps facebook page
- Island Bay Community Centre newsletter
- Paper responses at IBCC and Library

Respondents' Age



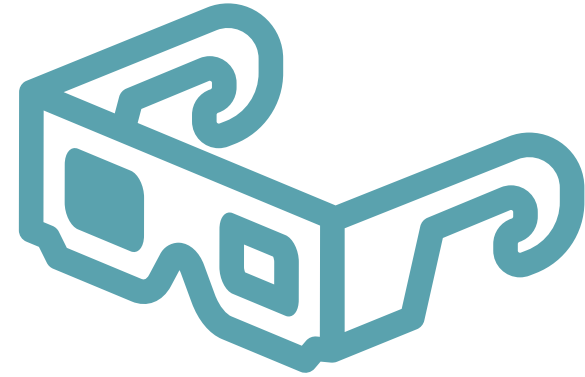
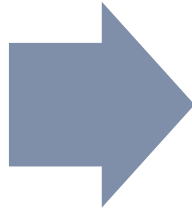
- Average age in Island Bay: 38 years.
- Total Island Bay population: 6828.
- Most respondents aged 30 – 79.

The results of the survey are primarily drawn from those who chose to respond to the survey. They are not representative of all Island Bay residents, particularly younger members. Nevertheless they give a glimpse into the views of some of our residents.

Focus of presentation

Four main questions in survey :

- What are your hopes for Island Bays' future?
- Are there any specific problems in Island Bay you would like to see addressed?
- Are there any specific opportunities in Island Bay you would like to see action on?
- What would you like to see Island Bay Residents' Association focus on in the next 2-3 years?



Presentation focuses on the key themes discussing what respondents want, and possible actions or opportunities to focus on.

We have a strong sense of community

In general, people see Island Bay as having a strong sense of community and that we have a good life here. People hope to continue to build on what we have.

- *“Continue to be a thriving and supportive community and celebrate how lucky we are to live here”.*
- *“Continued village feel and friendliness of local community.”*
- *“Island Bay to remain the unique little island of peace that it is.”*
- *“The natural beauty and warm, welcoming community remain as is.”*

It is important to people that the community is family friendly, inclusive, supportive and cares for everyone.

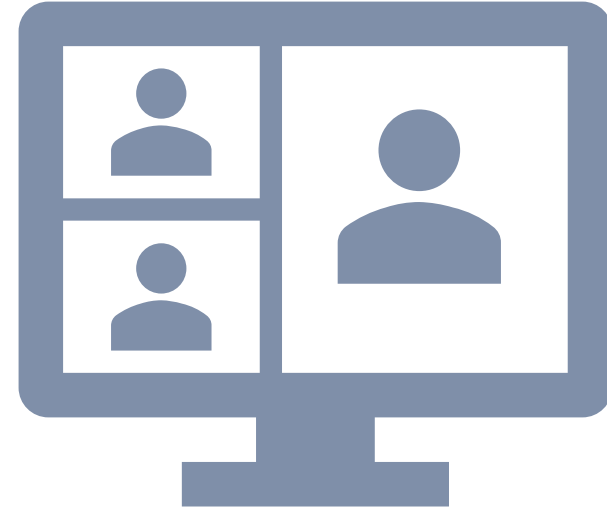
- *“A caring community where we look after the most vulnerable - the older and younger people especially.”*
- *“Supportive, safe community. A safe place for tweens/teens to hang out.”*
- *“Unity and a community which supports each other – everyone”.*
- *“Nice community, respectful to everybody particularly older, disabled and people from other communities.”*



But a few issues ...

People dislike the bickering and negativity in the community when discussing issues, especially online.

- *“Instant negativity from some of our residents about everything.”*
- *“Community can be very negative to the point I’ve left the Facebook pages.”*
- *“I’m worried that sometimes the online conversations are a little too disrespectful.”*
- *“Negativity online and in IBRA meetings”*



Some people noted that crime is on the rise

- *“Vehicle thefts, break-ins and registration plate theft seem to be on the rise”*
- *“Hooligans who are damaging cars and those that are reckless and have no regards for others”*

It is important to us to have thriving local businesses



People want to keep our essential shops and services, and see our local businesses thrive.

- *“That key services like the supermarket, pharmacy, post office etc remain in Island Bay.”*
- *“A small but vibrant retail and hospitality sector – that the community supports local”*
- *“The survival and growth of local independent shops”*
- *“I worry about the Empire being for sale and hope that we will continue to have a cinema in IB”*

There are opportunities for new businesses, especially hospitality

- *“More restaurants/eateries in the village.”*
- *“There isn’t a great pub. We need something along the lines of Parrotdog in Lyall Bay.”*
- *“A weekend farmer’s market would be beneficial to the community.”*
- *“Continue to develop village. Helping the buildings to be leased. Even pop ups.”*

We love community events and want more of them

- *“Hosting street parties and community bbqs to get to know our neighbours, and build a strong support system around the suburb”*
- *“We need more community activities to bring the people together.”*
- *“More community festivals - say having the Indians celebrate their Diwali, Chinese their new year, Fijians their Fiji Day - etc - that brings the community together and also becomes a learning experience for others.”*

The Island Bay Festival is important and we hope it maintains its unique identity

- *“IB festival is great, more things like that!”*
- *“Focus on the Festival it seems to be fading has always been a highlight need to find some enthusiastic young people to give it the multicultural feel it used to have a very strong Italian feel”*
- *“This year's festival was a little disappointing. There was nothing for the kids. The best festival was when the cups and saucer rides and ping pong balls in the clown mouths etc.”*

We see a role for IBRA in supporting events and connecting groups

- *“Community events and raising awareness of the various groups who already run so much in the community.”*
- *“Supporting the festivals - summer & winter, liaising with the community centre on social initiatives esp for elderly, promoting local working bees and volunteer groups by adding them to IBRA website with own page”*

We are generally satisfied with the village upgrade, and our attention is now on the buildings in the village centre, the library, and street care

People are concerned about poor state of many of the shops in the village centre, and a wish to see more maintenance by landlords and heritage upgrades

- *“The shops on the west side are quite nasty, the awning roof leaks and it’s grimy - I think pressure should be put on the owner to do some basic maintenance”.*
- *“Many of the buildings in the shopping area have earthquake notices. I’m not sure if it’s safe to be in or near them, but it certainly makes them feel unsafe. It would be great to see more of them upgraded like the blue one, which looks fantastic.”*
- *“Village vibrancy via encouraging landlords to make leases affordable and do up their facades.”*

We love the library and have interest in a larger library and community centre hub.

- *“Given the size of the suburb it would be great to have a much bigger library combined with a community centre - a whole village hub combined.”*
- *“My dream is for an enlarged Library cum Community Centre a place where people of all ages can go to and find it interesting and friendly. It would give us a sense of community.”*

Keeping streets clean and tidy is important.

- *“Now that the parade upgrades and cycleway are complete, the place looks great. Ongoing cleaning/keeping the streets tidy will need to be done.”*
- *“Dog poo on the footpath - provide a couple of dog poo bag dispensers on the parade/beach so forgetful dog owners can pick up the dog poo.”*
- *“Also the street cleaning improved. When it rains the drains will get clogged up and cause flooding.”*
- *“Lack of public rubbish bins outside the Parade and the South Coast.”*

We continue to be divided in our opinion of the cycleway



Supporters of the cycleway often also want to see more active transport

- *“More pedestrianisation and cycling, less traffic dominance”.*
- *“I just want to shout out for the amazing cycleway we have, how grateful I am for that... It really makes living in the Bay so much better!”*
- *“A safe bike lane between Island Bay and Houghton Bay, and on to Lyall Bay.”*

While others continue to be unhappy about the cycleway and changes to the suburb

- *“The cycle lane is painful”*
- *“Less cycleways and wider roads and avenue of trees.”*
- *“One cycleway instead of two.”*

Parking in the village centre is a major concern



- *“To retain the shopping we have by increasing the availability of car parks”.*
- *“Lack of parking is a problem for many of the senior members of our community. We have an amazing General Practice ... with essentially two car parks”.*
- *“Parking and congestion around the shops is terrible”*

Traffic congestion around Medway and the Parade is an issue.

- *“I’m all for the cycle ways but the intersection going into Medway is now a mess and it’s too tight for cars.”*
- *“Parking, moving bus stop at post office to layby by opening of NW carpark to improve flow of traffic as the traffic build up behind bus when it is stopped to embark and disembark passengers.”*
- *“Better access through shopping centre, where there is invariably a 'log jam' of vehicles causing frustration & putting pedestrians at risk even at the crossings near the supermarket from turning traffic”*
- *“In lane bus stops are creating massive traffic issues and creating dangers for road users and pedestrians. The narrow lanes where buses can’t pass each other on the parade are adding to the traffic blocking. Make bike lane buffers smaller and increase the lane size.”*

Traffic hazards were raised with two of specific concern



The speed of vehicles along The Esplanade is a major problem between Shorland Park and the beach, given the number of children crossing

"Ideally there would be a pedestrian crossing (or at least speed bumps?) between Shorland Park and the beach. Drivers tend to speed over the hill (coming from the south) and there are lots of kids crossing here."

"I would also like to see drivers slow down along the waterfront given how many kids are always crossing the road between the playground and the beach."

"Traffic calming is badly needed on The Esplanade from the Bait House to Derwent St intersection. Effective speed reduction - a raised traffic / pedestrian platform for access to the beach and a 10k speed limit."

A few people mentioned near miss car crashes almost daily between Reef Street and The Parade

"There is a near miss car crash most days (this is not an exaggeration) at the intersection of Reef St and the Parade - happy to chat more about this (our office looks out onto this intersection)."

"Also look to improve safety around the junction between The Parade and Reef St. Everyday there are so many near misses there."

Other traffic hazards were noted as follows

"Traffic humps in Trent Street to prevent excessive speeding."

"Clyde Street is an accident waiting to happen. Two schools, masses of vehicles and the preferred option for many motorists nowadays to avoid the congestion on the Parade."

"Since the new village roadworks have been completed in Island Bay, turning left from Eden Street onto The Parade seems much tighter for car. Unable to complete the turn without entering the oncoming traffic lane."

"The intersection at Mersey st and the parade concerns me with so much school traffic, cycle lanes, buses turning and pedestrians crossing on Mersey without a proper crossing."

**We need
affordable,
medium-density
housing,
especially for
young families,
but want it done
well**



If we don't focus on housing affordability we will continue to lose young families and children and become less diverse.

- *“More medium density, affordable housing. The high cost to buy a home mean myself and my siblings wont be able to buy a home or raise our future families here in all likelihood.”*
- *“One thing to be thinking about is housing affordability - we have a falling school roll because young families are finding it increasingly difficult to live in IB. ...There is often a focus on older people and their needs, and that is very important, but to keep the suburb alive we need kids!”*
- *“A lack of diverse housing and apartment options means many people who would like to live in Island Bay cannot afford to. This means Island Bay is not as diverse economically, ethnically or culturally as it could be.”*

Not everyone is happy about this though

- *“That Island Bay keeps its friendly quiet village atmosphere and does not lose this with the drive to higher density living in multistory buildings and reduced section sizes.”*

As we build more housing we should ensure it fits with the existing character of Island Bay, and doesn't significantly impact on neighbours.

- *“Housing is inevitably going to change; upwards with high density apartments. Please keep an eye on the proposed buildings to see that they are aesthetically pleasing as well as functional. And try to keep most of our historical features.”*
- *“I accept the need for some multi-level dwellings but can we please ensure some decent designs where care is taken not to block neighbours sun and light and to ensure that buildings built have reasonable sun and light and are not cheek by jowl.”*
- *“Council consenting residential buildings with no off-street car parking, hence creating parking congestion on streets.”*

There are opportunities for improvements at the beach

We could connect Shorland Park and the beach by removing the road

- *“In the 60+ years I have lived in the Bay I have observed with growing concern the erosion of the beach. ... With climate change it is going to get much worse very quickly, and I would like ... to revisit the ideas ... concerning removing part of the seawall and Esplanade and linking Shorland Park to the beach with sand dunes.”*
- *“I'd love if the esplanade was closed off at Shorland and the park extended across to the beach. Minor traffic inconvenience to have a world class tapu te ranga beach/reserve area.”*

We could have toilets and changing rooms at the beach

- *“I would like us to have changing, toilet and shower facilities at the beach, similar to Scorching Bay. I understand facilities like that already exist under the surf life saving club. The loos there are never open.”*
- *“The public toilets and change rooms on the beach are in a sorry state and we could do with better facilities given how busy the beach gets.”*

We could make better use of the surf club

- *“The Surf Club on the Beach is under utilized and could become a real hub of activity.”*
- *“It would be amazing to see something like Maraunui open up in the Island Bay surf club building, or some other venture that celebrates our fishing/Mediterranean heritage”*



People care about protecting our environment

“A vibrant, safe environment that still values our taonga of coastline, hills and bush.”

“That we protect and enhance our bush, beach and wildlife.”



Climate resilience is an issue, especially on the South Coast

“That the issue of climate change is addressed as it affects properties around the South Coast.”

“Continue erosion control on the shoreline.”



There are opportunities for communities and Council to enhance our environment

“Yes, the invasive weeds (like asparagus weed) that are taking over some reserve areas. It would be great to see the council being more proactive in helping the communities restore these areas.”

“There is some great opportunities for people to join in with the Manawa Karioi and other groups looking after our green spaces.”

“We could show how we care about the environment by having more plantings locally.”



People also see a role for IBRA in supporting environmental and climate resilience issues and groups

“Anything and everything that is going to engage residents to look after our environment.”

People think the Residents' Association is doing a great job and support its inclusive, positive and balanced approach

People want IBRA to focus on:

- Building an inclusive and respectful community
- Keeping the community informed on local issues, groups and events
- Raising issues with the Council in a positive and balanced way
- Social events and community projects
- Support for local businesses

People have a strong preference for email newsletters from IBRA, with Island Bay Peeps facebook as second preference.

Just keep doing what you are doing and offering people the opportunity to keep talking to each other.

Keep doing what you're doing. The changes you've made in how you're working and engaging with the community, and representing us in a balanced way, are phenomenal and I'm grateful to you.

I think you're doing a great job working on opportunities and issues as they arise

Providing well run opportunities for residents to come together and learn about and discuss local issues. Fantastic little community projects like the pataka kai

Social events. Continue your support for respectful and inclusive community.

Interfacing with the council, ensuring that improvements continue, and building community among those who want to positively engage.

Do what you're doing - focus on information sharing, events, and positive engagement.

What has changed since the 2022 survey?

More community cohesion and a stronger sense of community.

- Less heat in the cycleway issue.
- A sense of a few negative people rather than deep community divisions.
- Less negativity about the Council and feeling they are not listening.
- More satisfaction with the work of IBRA.

More concern about the success of local businesses and desire to support them to thrive.

Fewer concerns about speeding traffic (except by the beach) but lack of parking in the village is a bigger issue.

Specific issues and opportunities that IBRA could focus on

Supporting our businesses to thrive by:

- Advocating for **parking** in the village
- Raising **congestion** issues
- Supporting **maintenance** by landlords and heritage upgrades

Monitoring **crime** trends

Support the **Island Bay Festival** to maintain its unique identity and to thrive

Advocating for a **larger library** and community centre hub

Advocating for measures to strengthen **climate resilience on the South Coast**

Advocating for traffic calming and a ***pedestrian crossing between Shorland Park and the beach***

Further surveying the Community on interest in **connecting Shorland Park and the beach** by removing the road

Advocating for making better use of the **surf club, and toilet / changing facilities** at the beach

Raising concern about frequent near accidents at the **Reef Street / Parade junction**

**Thank you to everyone
who responded to the
survey!**

