

DRAFT Community Climate Change Adaptation Programme

Presentation to the Coastal Climate Change Coalition – January 29, 2023

Whakawhanaungatanga

- **Where do you live?**
- **What do you love about the south coast/city?**
- **What are you most concerned about?**
- **What do you hope for how Council can work with communities to adapt to climate change?**

What we'll cover today

1

**Update on local climate risk data
& assessments**

2

**Your feedback on DRAFT
Community Climate Adaptation
Roadmap, timeline, community
involvement**

3

**Your ideas for the Digital Climate
Adaptation Tool project**

Acknowledgements

- We understand the topic can be challenging – let's care for each other.
- Communities are already doing a lot to respond to the climate crisis
- There has been lots of learning from other places and people in the development.

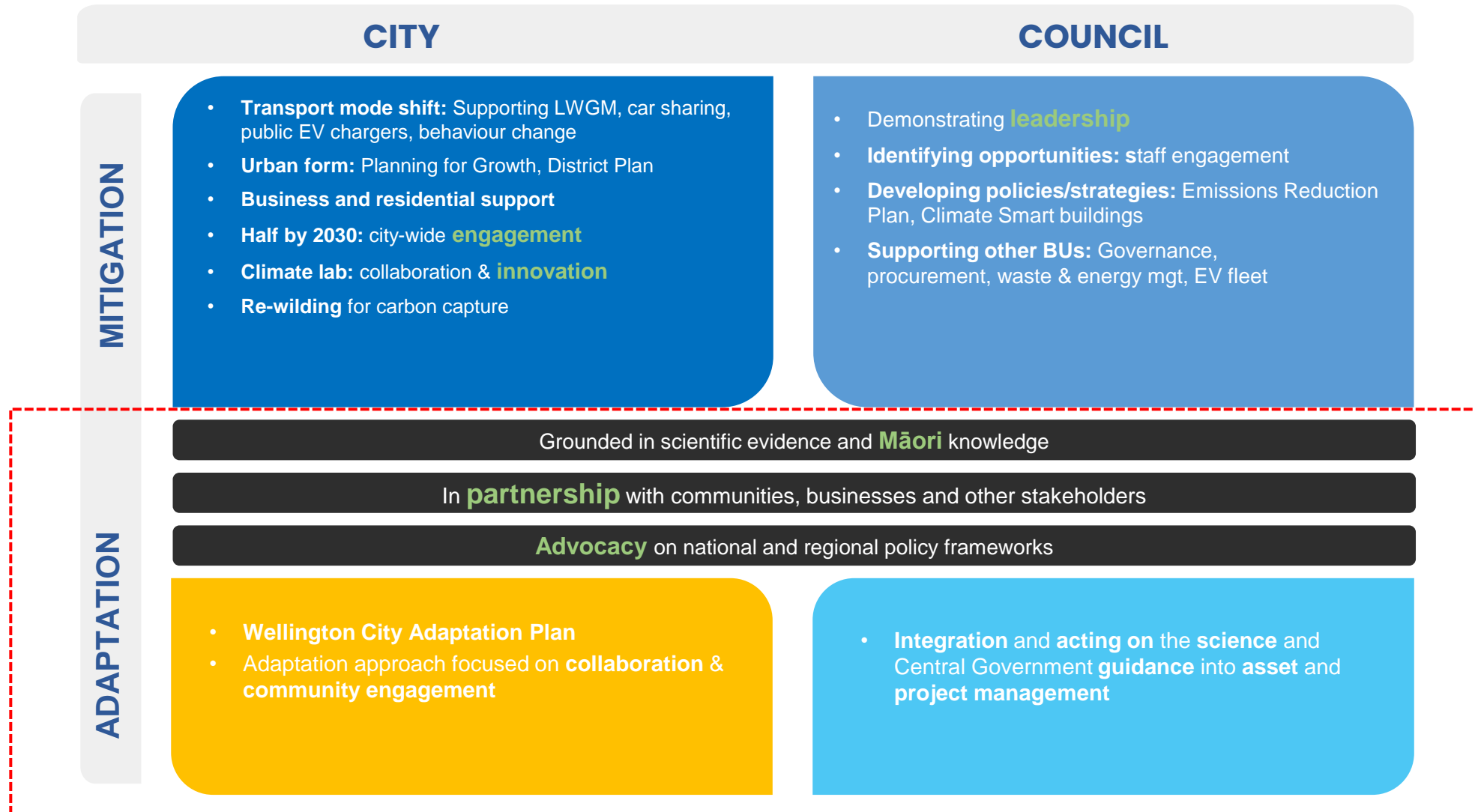
Disclaimer

- Public versions of this content will likely change.
- The content is **draft** and we intend to change it to take on feedback from communities and Council staff.
- We'll need to work together as a community.

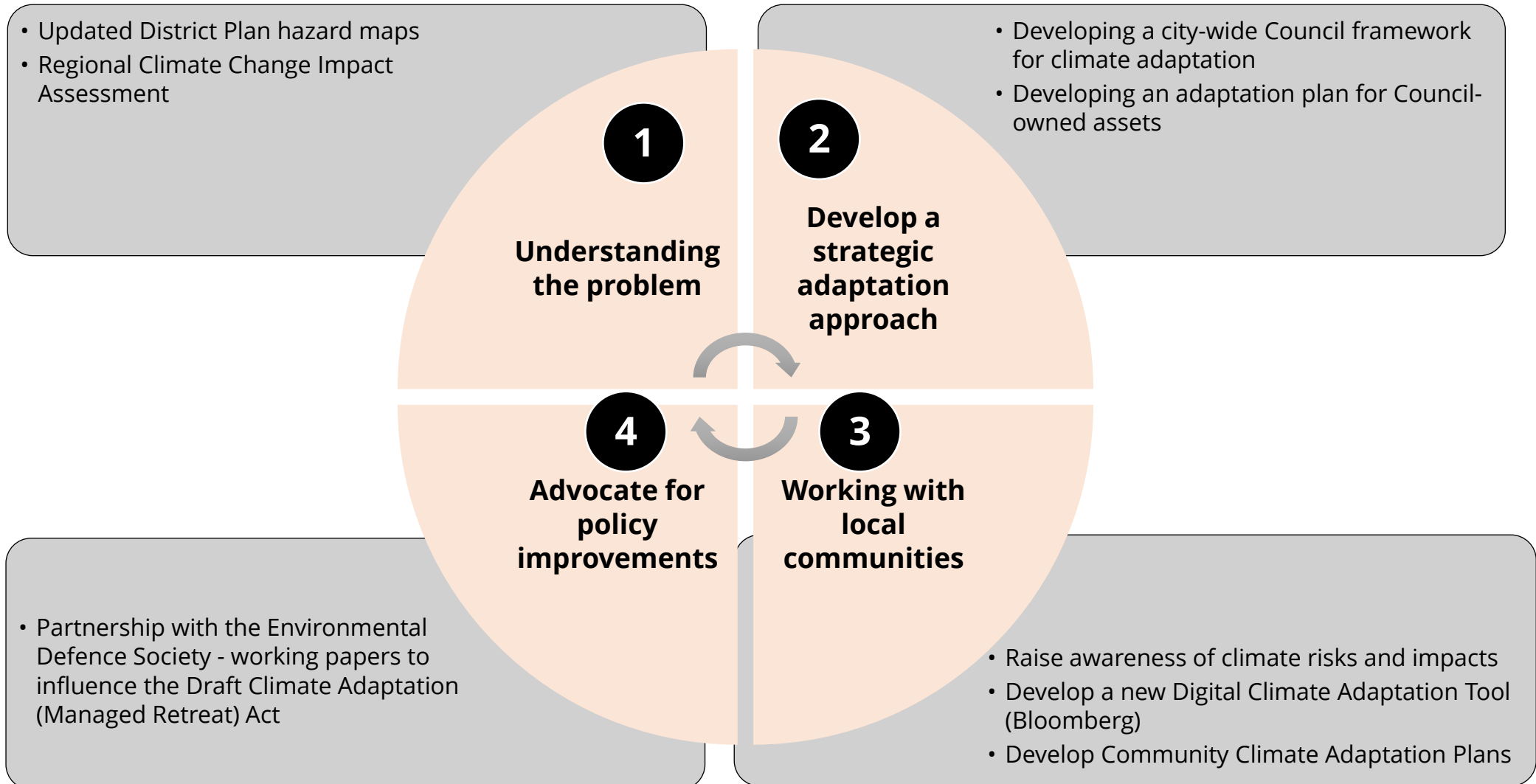


[Video link](#)

Council's climate change strategy



Our 4 Climate Adaptation Action Areas



1 Updated climate change risks & maps

GWRC Sea level rise map link

WCC District Plan map link

Sea Level Rise and Storm Surge Modelling

Click buttons to swap content

Sea Level Rise

Storm Surge

+ Sea Level Rise

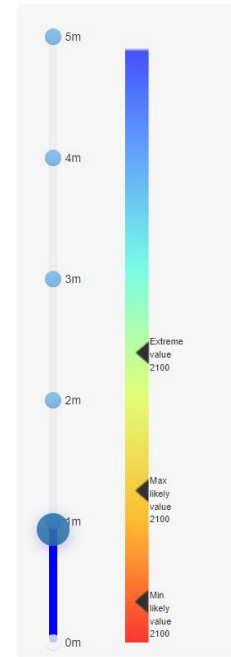
This website shows a dynamic map of areas in the Greater Wellington region that will be affected by sea level rise.

Sea level is known to be rising in the Wellington Region as elsewhere in the world. Currently sea level is rising at about 3mm per year in the region.

However sea levels rise is expected to accelerate in the near future due to climate change. Predictions vary but more information is listed here.

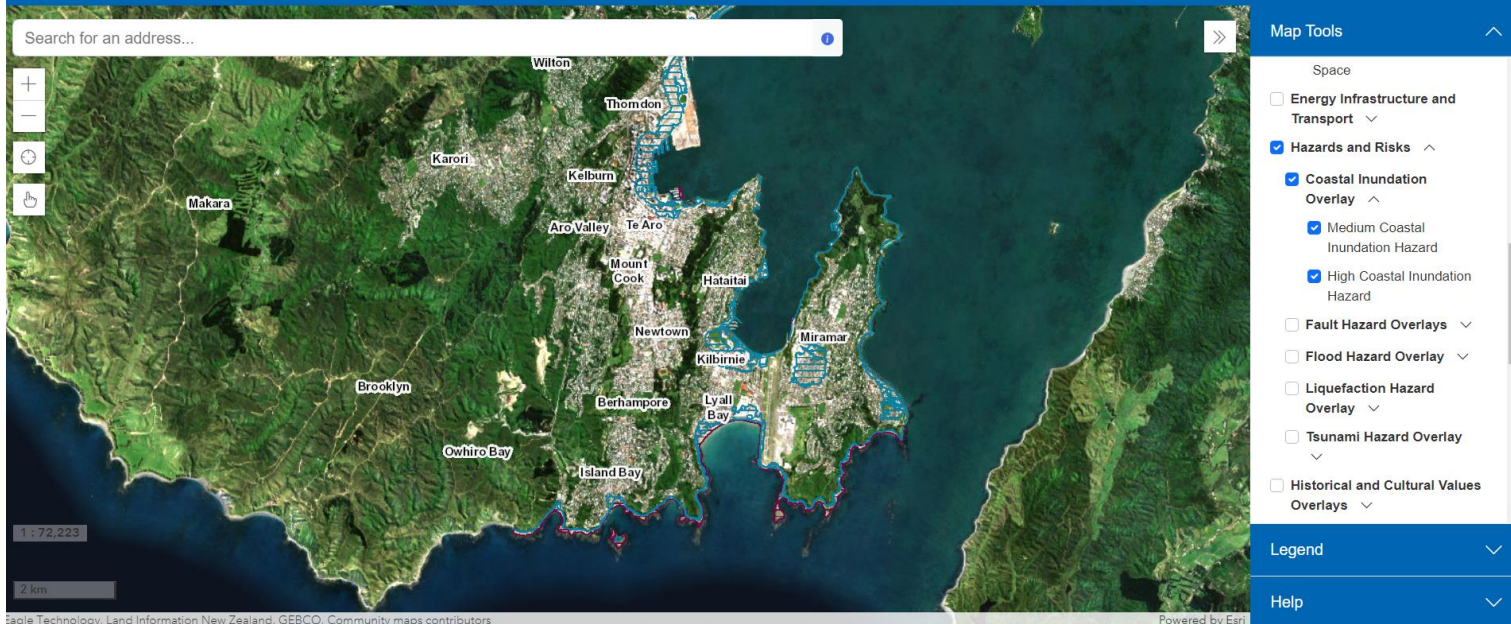
+ How to use

+ Data sources



Wellington City Proposed District Plan

Absolutely Positively
Wellington City Council
Me Heke Ki Pōneke







2

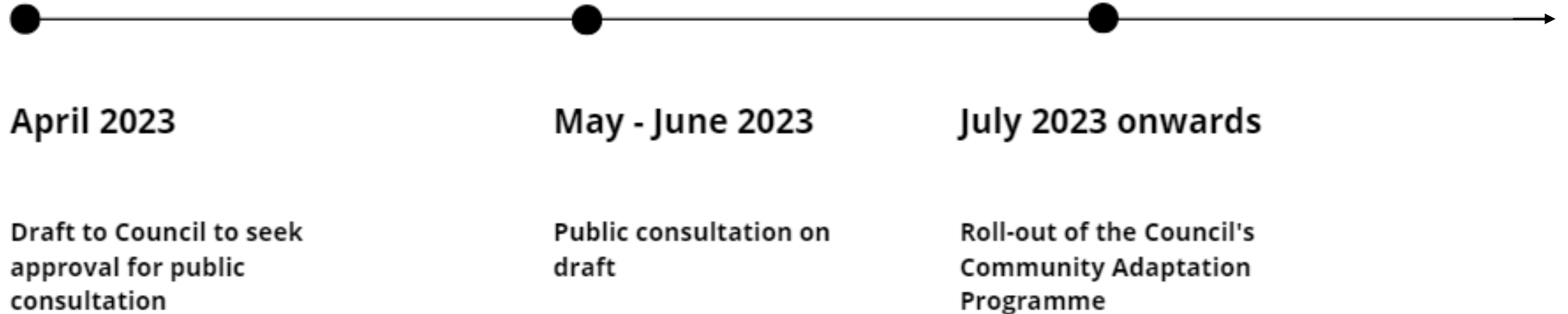
DRAFT Community Climate Adaptation Programme Roadmap

Please give us your feedback

- What do you like?
- What is lacking/missing?

DRAFT

Timeline



What's it about?

Vision

Wellington's climate adaptation decisions are co-created & informed by the priorities, experiences and knowledge of mana whenua and the wider communities of Pōneke, especially those disproportionately affected.

Purpose

The purpose of this programme is to support Wellington's most vulnerable communities to prepare for and adapt to the unavoidable local impacts of climate change in a fair and sustainable manner.

Scope

- Climate change hazards in WCC
- Planning horizon = 100 years (long-term focus)
- 3-5 communities selected for the pilot phase (2023 – 2025)

Goals & objectives

Scalable, equitable, targeted, and integrated planning approach

Wellington City Council's
City-wide Adaptation
Framework & Plan

Local Area Adaptation Plan

Local Area Adaptation Plan
Local Area Adaptation Plan

Local Area Adaptation Plan

Goal

The goal is to support the highest-risk communities in Wellington to adapt to climate change impacts.

Outcomes

1. Reduce vulnerability to the impacts of climate change in Wellington
2. Enhance the adaptive capacity of communities and the city
3. Strengthen community resilience

Objectives

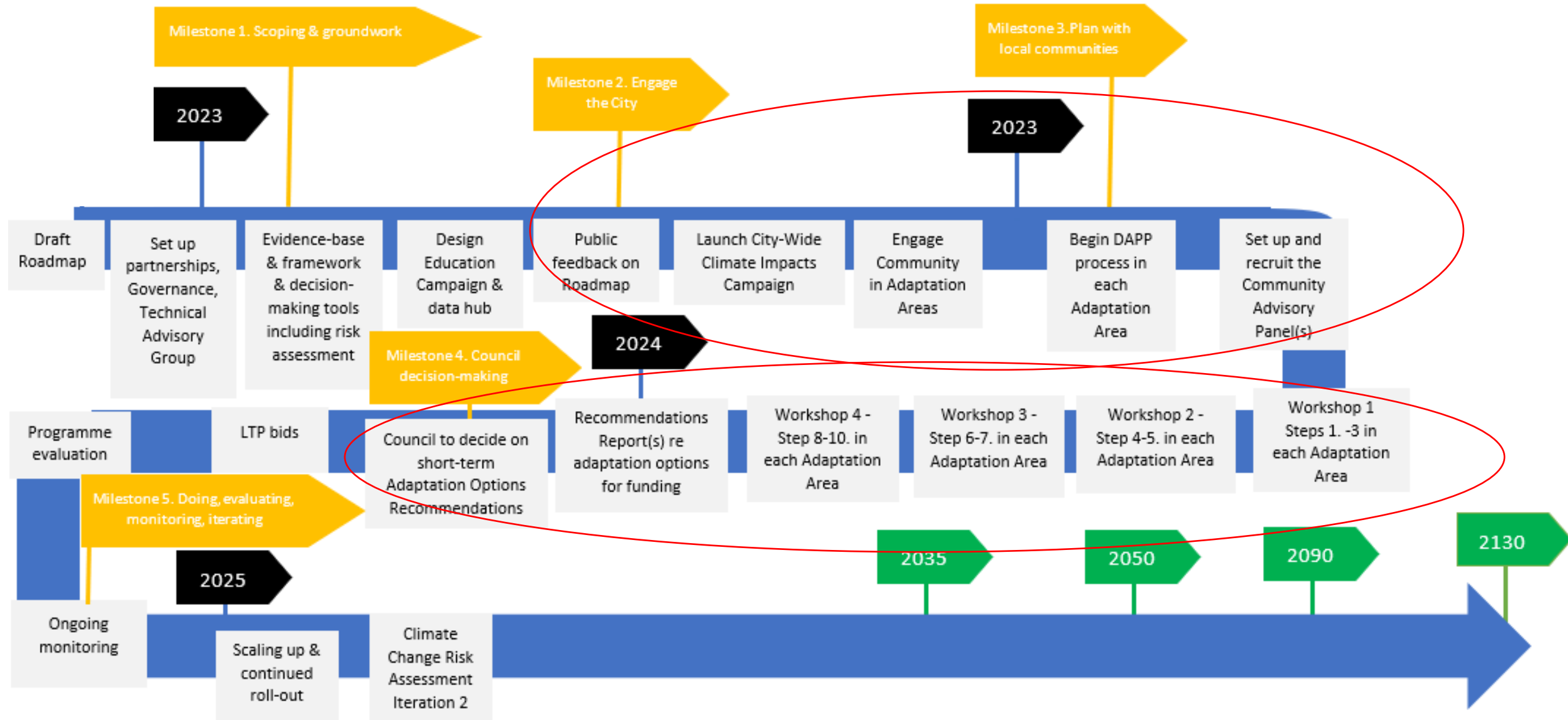
- Wellingtonians are **aware** of the climate change risks, adaptation options and are empowered personally and as communities to act in the short-term
- WCC builds strong **partnerships** and collective action for adaptation within and across communities, local government, mana whenua, and others in the region
- WCC has **scalable, timely and cost-effective processes, systems, tools, information/data**, and networks/trust required to strategically manage climate change risks long-term at the community level
- High-risk communities co-create **Local Adaptation Pathways** (with signals, triggers, thresholds)
- Council's **Infrastructure Plan** and other plans/strategies are informed by the Community Adaptation Pathways Plans co-created with Wellingtonians

Delivery phases

5 key phases over 3 years:

- **Phase 1:** Scoping, groundwork & partnerships
- **Phase 2:** Engage the city
- **Phase 3:** Plan with Local Communities
- **Phase 4:** Council decision-making
- **Phase 5:** Implementation, learning, iterating

DRAFT Roadmap delivery timeline



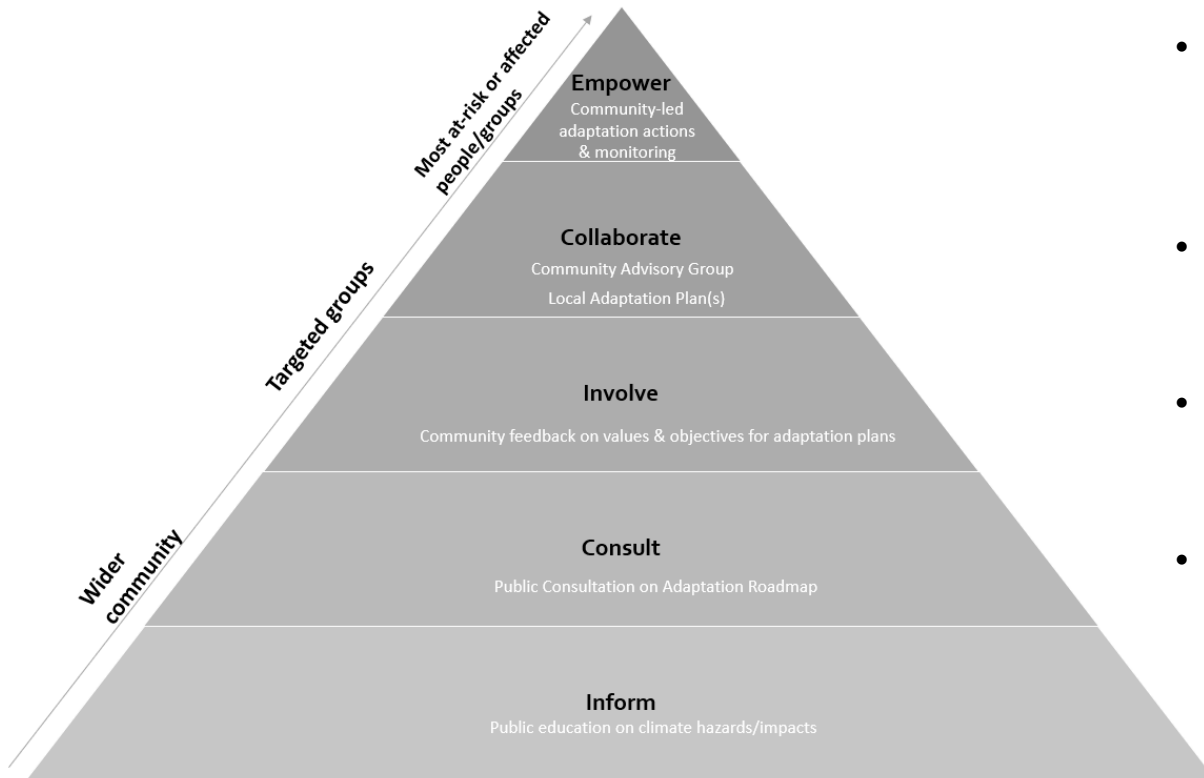
Community-centred climate adaptation framework

- Communities are at the heart
- Dynamic Adaptation Pathways Plans (DAPP)
- 5 parts, 10 steps in the process



Source: Adapted from MFE Coastal Hazards Guidelines.

Guiding principles for community engagement



The community engagement for this programme is guided by the following principles for **meaningful community participation & engagement**:

- **Community-centred** – affected communities are involved in the decision-making process and the communities will have meaningful / appropriate influence over decisions.
- **Inclusive and meaningful participation** - Community engagement will involve those who are affected in the planning and decision-making process, including opportunities to influence how they are engaged.
- **Take time and be flexible to community needs** – adapt the delivery timeframes and engagement techniques to suit the communities.
- **Accessible information for communities** will be provided in a timely manner to support meaningful and informed decision-making.
- **Transparency and accountability** – participants will know how their input affects the decisions

Selecting communities for the piloting the programme

Place-based approach - “Adaptation Areas” of similar morphologies, processes, hazard exposure and current management practices, and useful community engagement “catchments”.

Representation of community interests inclusive of wide range of users/interest groups (including future generations)

Scope of hazards = climate change

Selecting and prioritising the assessment of “Adaptation Areas” is based on the following criteria:

- Greatest vulnerability/risk (high exposure, high sensitivity, low adaptive capacity)
- Community willingness/interest
- Availability of information/evidence base

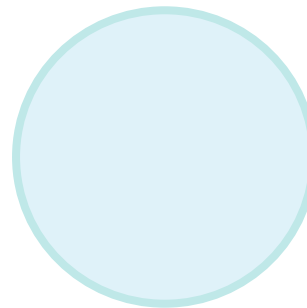
Guiding principles for climate adaptation

- Honour Te Tiriti by working in partnership with Mana Whenua and Māori communities and applying mātāuranga to adaptation decision-making
- Community-centred approach that is inclusive, locally-led and regionally-coordinated
- Promote social justice (including intergenerational equity) and other co-benefits
- Focus on long-term and transformative adaptation are prioritised
- Flexible, proactive, evidence-based, and long-term approach
- Prioritise nature-based/natural solutions

All adaptation types to be considered

Common principles for optioneering

- **Effectiveness** (for relevant time period)
- **Feasible** – financial, legal, technical or other requirements
- **Sustainable/ecologically sound** – acceptable environmental impact
- **Meets other Guiding Principles**



No action



Accommodate



Protect

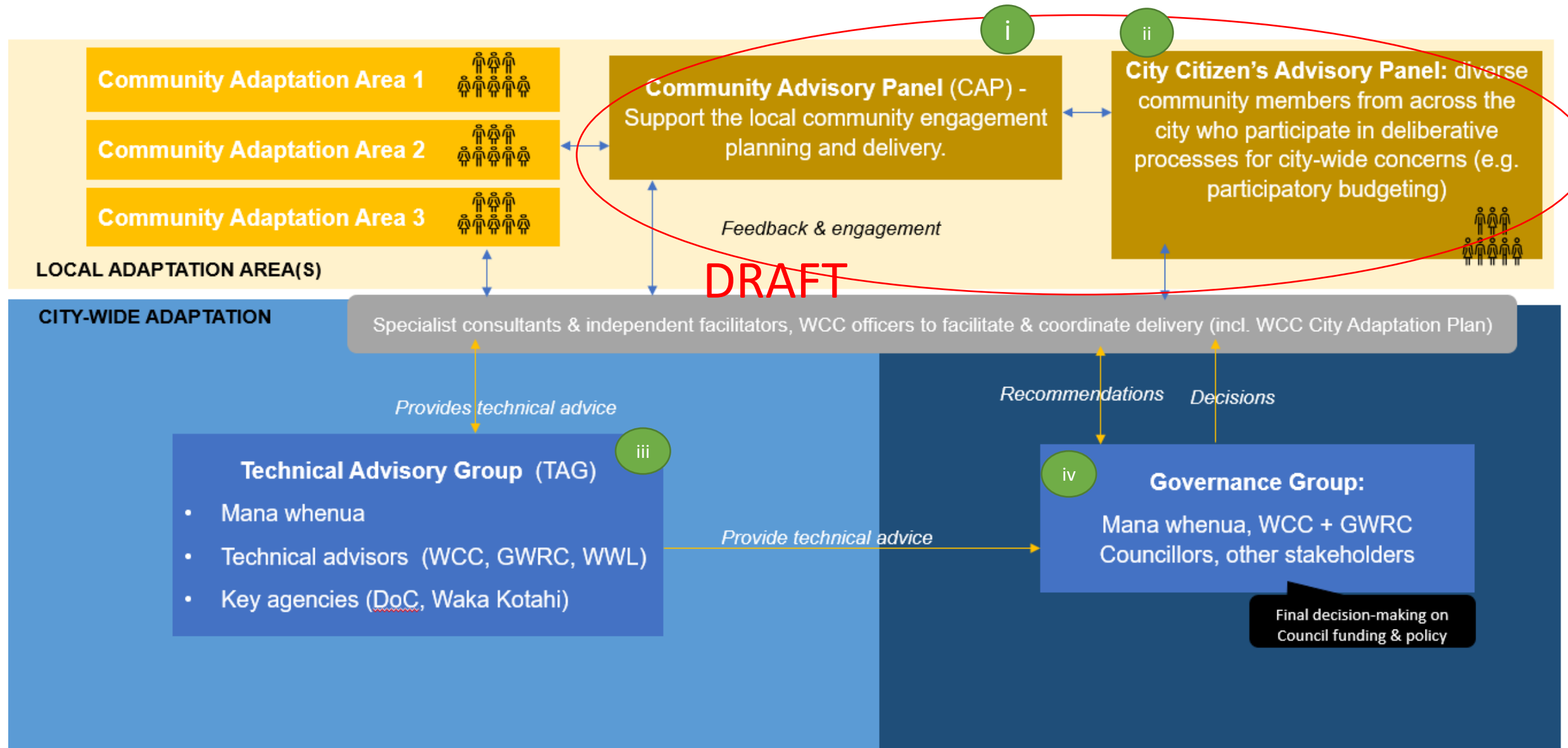


Avoid



Planned
relocation

Governance and decision-making structures



Takutai Kāpati Coastal Advisory Panel case-study



The purpose of the Takutai Kāpiti Coastal Advisory Panel (CAP) is to develop the Strategy for KCDC consideration.

The CAP is the formal mechanisms through which wider community input and indigenous knowledge are used to develop a set of recommendations for coastal hazards adaptation for council's consideration.

Panel members have full decision-making rights involving the scoring of the MCDA analysis, development of adaptation pathways based on this scoring and making recommendations to Council on the preferred pathways to be followed in each Adaptation Area. ([source](#))

Questions

- How can Council better support community-led action already happening?
- What roles do you think communities should play in the process?
- How can we structure community engagement to suit communities to meaningfully participate in local adaptation planning?
 - Timing and time available
 - Engagement techniques (e.g. in person workshops, online engagement)
 - Recruitment – how do we make it fair?
- What information would be needed to support meaningful participation?

How can we continue to work together?

- **Who would be interested in being involved in the development of the climate adaptation projects?**
- **What suggestions do you have for how we can engage the community in Council's climate adaptation work?**

Summary

- We welcome feedback at any stage.
- Formal public consultation on the draft Community Climate Adaptation Programme would be scheduled after approval from Council (expected end of April 2023).
- If there are other ways our team can support your work, please let us know.

Thank you!

Jamuna Rotstein

Principal Advisor, Climate Change Adaptation
Wellington City Council

Jamuna.Rotstein@wcc.govt.nz

Climateaction@wcc.govt.nz



CLIMATE ADAPTATION DIGITAL ENGAGEMENT TOOL

Bloomberg Mayors Challenge

WHAT IS THE BLOOMBERG PHILANTHROPIES MAYORS' CHALLENGE?

"Bloomberg Philanthropies' Mayors Challenge is a competition designed to spark **innovative, replicable ideas** for improving cities, and the lives of people living in them, by **encouraging leaders to think outside the box** about how to confront their most difficult challenges."

631

CITIES
APPLIED

99

COUNTRIES
REPRESENTED

15

WINNING
CITIES

THE PROBLEM

Wellington is a low-lying coastal city that **is highly exposed to climate change impacts** including sea level rise, storm surges and flooding. With few options for relocating infrastructure, businesses and homes, **climate adaptation planning for Wellington is extremely complex and urgent.** It is critical that we enable evidence-based climate adaptation decisions in the next 2-3 years. Our last climate change engagement in 2019 had a response rate of 0.6% of the residents - many voices are going unheard. **We need new tools and engagement methods that allow everyone to understand the impacts, and to participate in co-creating a climate-resilient city.**

SOLUTION CONCEPT + VISION

We will use gaming technology to create a compelling, empowering and accessible tool for the public to interact with and learn about climate change impacts on the city.

It will support communities to co-create climate adaptation actions, and exchange information and ideas with the Council to allow for critical and coordinated adaptation decisions to be made that communities feel ownership of.



Here's a snapshot of the technology – *there are many ways we could develop it*

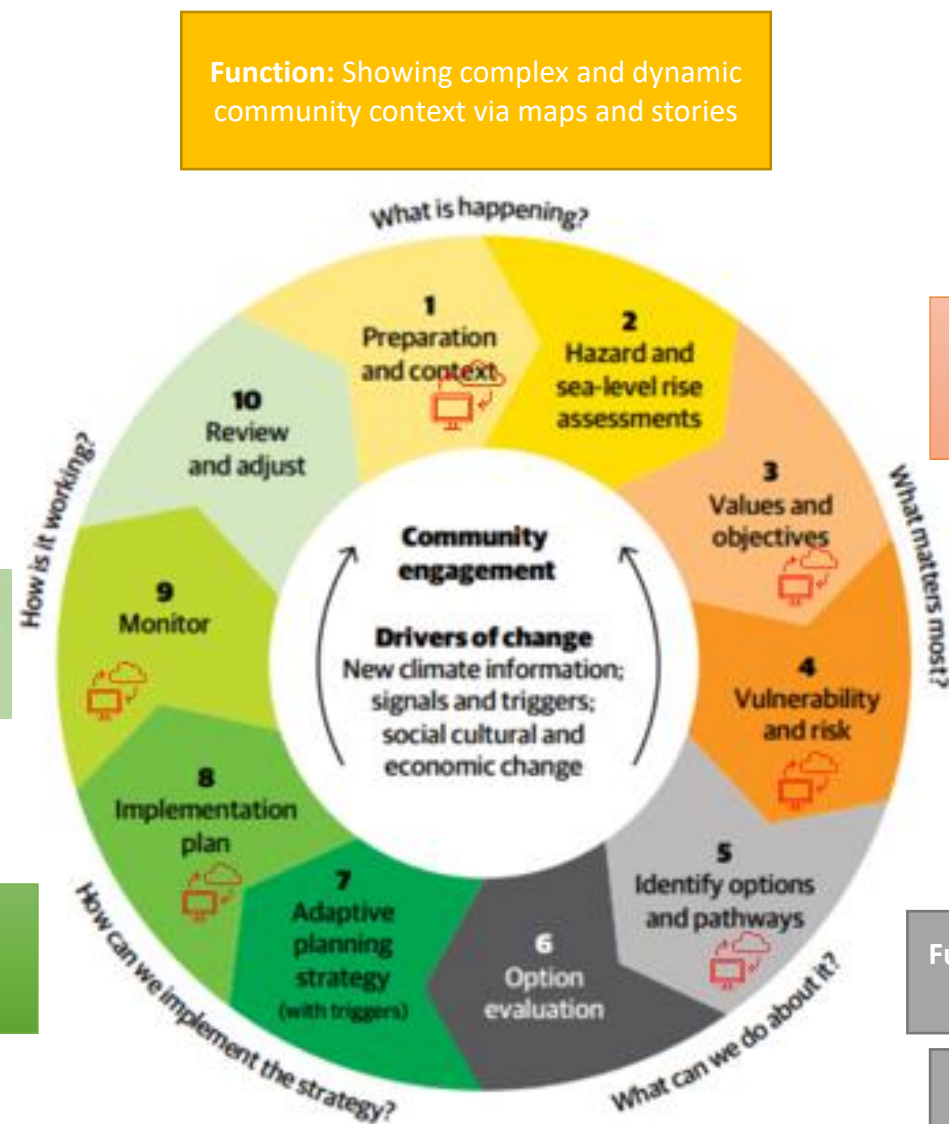
We want to co-design the tool with affected communities



[Video link](#)



How can the technology best support climate change adaptation outcomes for Wellington?



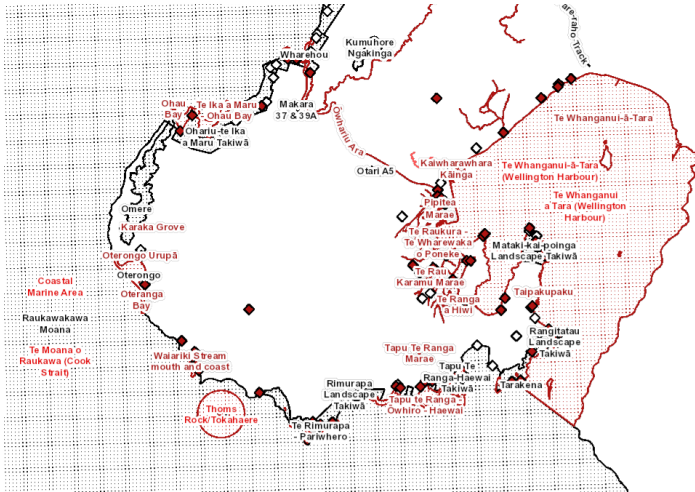
Function: allow communities to record local observations/ experiences

Function: multimedia experience visualising preferred adaptation plans (short-term, medium-term, long-term adaptation plans)


Function: visualise adaptation options to help people imagine potential future changes & trade-offs

Function: enable communities to co-create/ suggest adaptation options

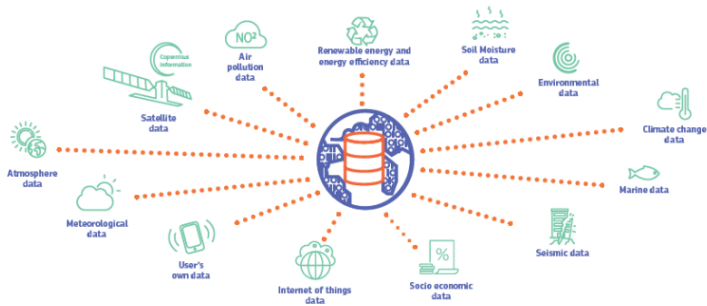
Here are some ideas... *what are yours?*



W Wellington City Council
About Wellington City - Waterfront ...

 NIWA

Satellites reveal NZ's coastal health ...



Destination Earth will enhance scientists' ability to anticipate environmental disasters and mitigate their impacts by joining environmental data, socio-economic data, and human behavior into a single digital twin model. Image: European Commission



CoastSnap

community beach monitoring

Help us record our changing coastline: Snap it + share it!



#CoastSnapKirra



Place smartphone on its side in camera cradle and take a photo



Hashtag #CoastSnapKirra and share using social media or email:

 Post directly to CoastSnapQLD page

☐ Use original photo ratio ()

No adjustments required

✉ coastsnap@unsw.edu.au

Please state photo date and time if not sharing straight away

More information: beachesgoldcoast.com.au



Concept rendering of Emerald Tutu, a wave mitigation system of floating wetland and walkways. Credit: Emerald Tutu

***Please share your ideas / feedback regarding
the digital tool for climate adaptation in this
short survey***

Survey link: <https://forms.gle/ZCR3LYF68MMK594p7>