

We are proposing a change in your area

Kia ora,

This leaflet is to let you know about a change we are proposing to make in your neighbourhood.

Proposal:

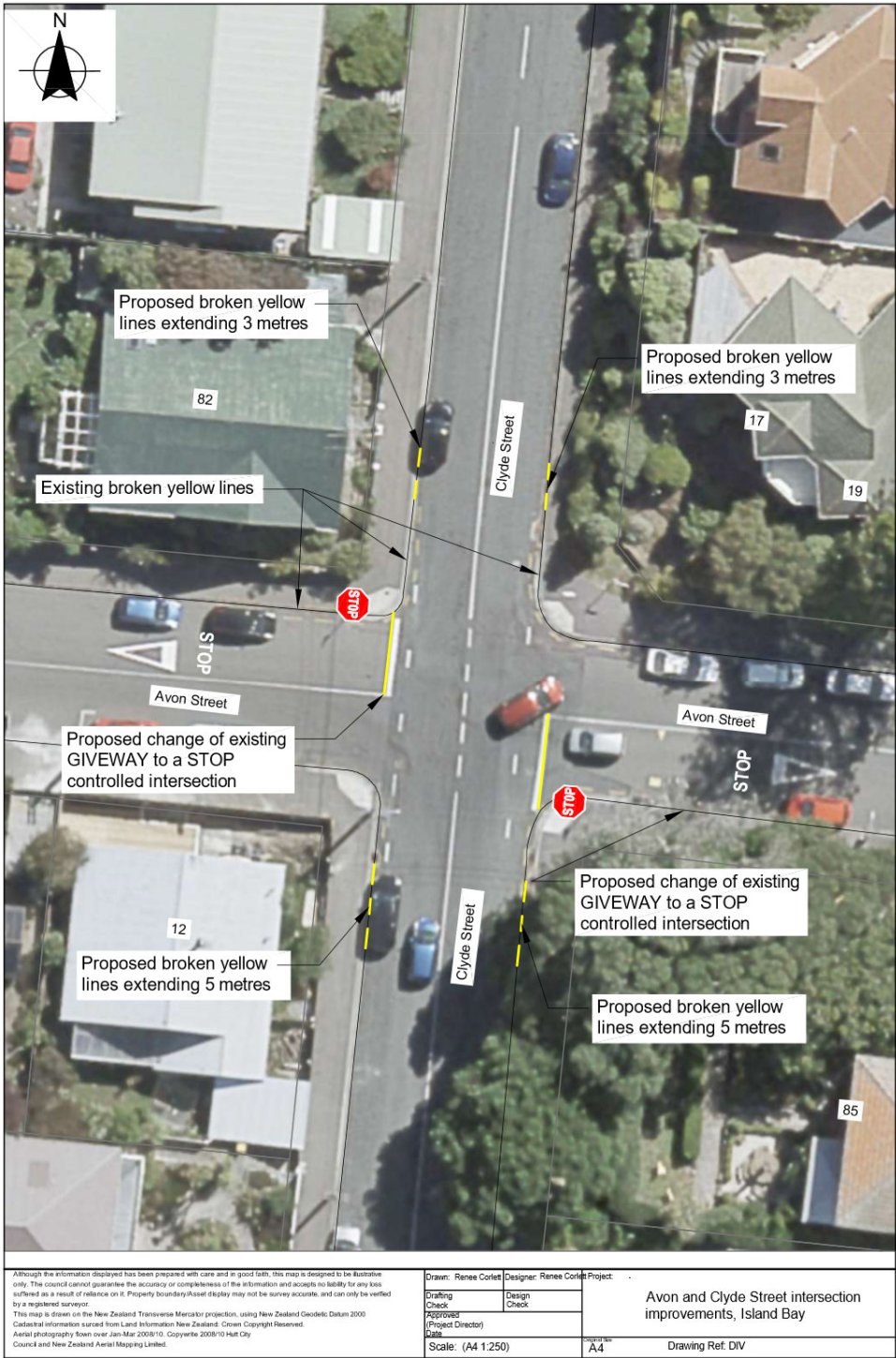
Reference	TR33-21 Avon Street, Clyde Street intersection, Island Bay - Proposed stop-controlled intersection; No Stopping At All Times
What we'd like to do	<ul style="list-style-type: none">• Change the existing two give way controls to two stop controls on Avon street at its intersection with Clyde street.• Install additional broken yellow lines on all four corners of Clyde Street at its intersection with Avon Street.
Why we are proposing the change	<ul style="list-style-type: none">• We have received safety and visibility concerns from local residents at the Avon Street and Clyde Street intersection. NZTA have also identified this intersection as part of their priority list for safety improvements due to the volume of crashes occurring.• NZTA Crash analysis System indicates that there have been 6 reported crashes at this intersection in the last 5 years, 3 involving vehicles on Avon Street not giving way to vehicles travelling northbound on Clyde Street. The proposed stop-controlled intersection along with increased visibility due to additional broken yellow lines will improve the safety at this intersection.• We have been onsite to investigate and have identified this intersection as warranting a stop control based on NZTA guidelines. This is due to the existing visibility at the intersection is not sufficient.
Location – where we propose to make the change	Avon Street intersection with Clyde Street, Island Bay
Impact	<ul style="list-style-type: none">• Improves safety for pedestrian and road users.• Net parking impact – removal of four unrestricted parking spaces.• Pedestrian impact – positive, increased visibility and safety for pedestrians crossing at this intersection.
How this relates to the parking policy	<ul style="list-style-type: none">• Support safe movement – facilitate the safe and efficient movement of people and goods by focusing on people moving along transport corridors rather than people parking or storing stationary vehicles.
Additional Information	<ul style="list-style-type: none">• Average daily traffic count – 1,494. <p>To view the legal description for this Traffic Resolution, an electronic copy of the report will be available on the Council's website from 9.00am Thursday 1 April 2021 at www.wellington.govt.nz/haveyoursay or you can call (04) 499 4444 and we will send one out to you.</p>

We are proposing a change in your area

Feedback	<ul style="list-style-type: none">• If you would like to provide us with specific feedback, you can do so by filling out an online submission form, downloading a printable submission form on www.wellington.govt.nz/haveyoursay or emailing us at trfeedback@wcc.govt.nz . Please note if you are giving feedback the consultation period opens 9.00am Thursday 1 April 2021 and finishes 5.00pm Friday 16 April 2021.• What we do with your personal information: All submissions (including name, but not contact details) are provided in their entirety to elected members and made available to the public at our office and on our website. Personal information (including contact details) will also be used for the administration of the consultation process including informing you of the outcome of the consultation. All information collected will be held by Wellington City Council, 113 The Terrace, Wellington, with submitters having the right to access and correct personal information.
Next Steps	<ol style="list-style-type: none">1. Feedback collated by Monday 19 April 2021.2. The proposal will go to the Regulatory Processes Committee on Tuesday 18 May 2021.3. If approved, the proposal will be installed within the following 3 months.

We are proposing a change in your area

Traffic Resolution Plan: TR33-21 Avon Street, Clyde Street intersection, Island Bay - Proposed Stop-controlled intersection; No Stopping At All Times



We are proposing a change in your area

Legal Description:

Add to Schedule G (Giveway & Stop) of the Traffic Restrictions Schedule

Column One	Column Two	Column Three
Avon Street	<i>Stop control</i>	<i>Avon Street at its west bound approach to its intersection with Clyde Street.</i>
Avon Street	<i>Stop control</i>	<i>Avon Street at its east bound approach to its intersection with Clyde Street.</i>

Delete from Schedule D (No Stopping) of the Traffic Restrictions Schedule

Column One	Column Two	Column Three
Clyde Street	<i>No Stopping, At All Times</i>	<i>West side, commencing from its intersection with Avon Street and extending in a northerly direction following the western kerbline for 5.5 metres.</i>
Clyde Street	<i>No Stopping, At All Times</i>	<i>East side, commencing from its intersection with Avon Street and extending in a northerly direction following the eastern kerbline for 7 metres.</i>
Clyde Street	<i>No Stopping, At All Times</i>	<i>East side, commencing 183 metres east of its intersection with Thames Street and extending in a northerly direction following the western kerbline for 5 metres.</i>
Clyde Street	<i>No Stopping, At All Times</i>	<i>West side, commencing 446 metres west of its intersection with Mersey Street and extending in a northerly direction following the western kerbline for 7 metres to its intersection with Avon Street.</i>

Add to Schedule D (No Stopping) of the Traffic Restrictions Schedule

Column One	Column Two	Column Three
Clyde Street	<i>No Stopping, At All Times</i>	<i>West side, commencing at its intersection with Avon street (Grid coordinates X=1,748,519.15m Y=5,422,705.96m) and extending in a northerly direction following the western kerb line for 8.5 metres.</i>
Clyde Street	<i>No Stopping, At All Times</i>	<i>East side, commencing from its intersection with Avon Street (Grid coordinates X=1,748,528.07m Y=5,422,705.48m and extending in a northerly direction following the eastern kerb line for 10 metres.</i>

We are proposing a change in your area

Clyde Street	<i>No Stopping, At All Times</i>	<i>West side, commencing 441 metres north of its intersection with Mersey Street (Grid coordinates X=1,748,432.29m Y=5,422,260.10m) and extending in a northerly direction following the western kerb line for 12 metres.</i>
Clyde Street	<i>No Stopping, At All Times</i>	<i>East side, commencing from its intersection with Avon Street (Grid coordinates X=1,748,527.72m Y=5,422,693.68m and extending in a southerly direction following the eastern kerb line for 10 metres.</i>

Prepared By: Renee Corlett (Transport Engineer)

Approved By: Amin Shahin (Team leader Transport Engineering)

Date: 19/03/2021